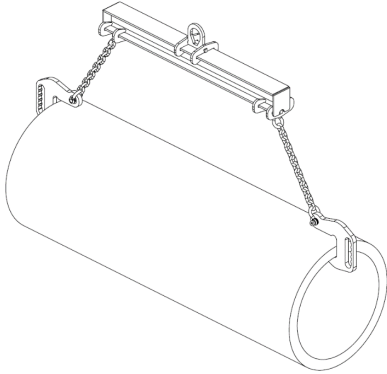


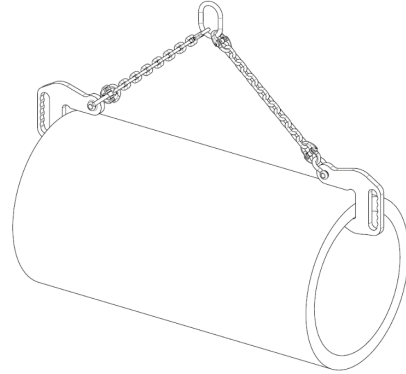
APPLICATIONS

Lifting of horizontal pipes or tubes made of various materials.

High capacity hooks with a round support for a better contact with the load.



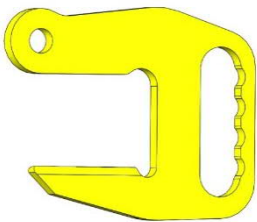
F hooks with lifting beam: permits reduction of global height when lifting



F hooks with 2-legged sling

The hooks have an ergonomical handle and the weight and mechanical resistance are optimized.

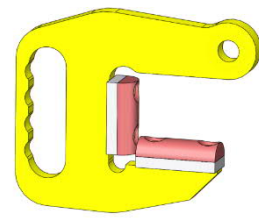
F hook



F hook with PVC protection



F hook with PU protection



DESCRIPTION

These hooks have a heavy capacity and round bearing surface for a better contact with the load.

The F hooks need to be used with slings. Tractel Solutions proposes from now on a range of slings, specially adapted to the F hooks.

These slings are designed with a special link in order to use the hooks in optimal conditions (sling hook 90°), for different pipe lengths.

FUNCTIONING

Use in pairs with a 2-legged sling. Position a hook at both ends and perform lifting.

IMPORTANT INSTRUCTIONS

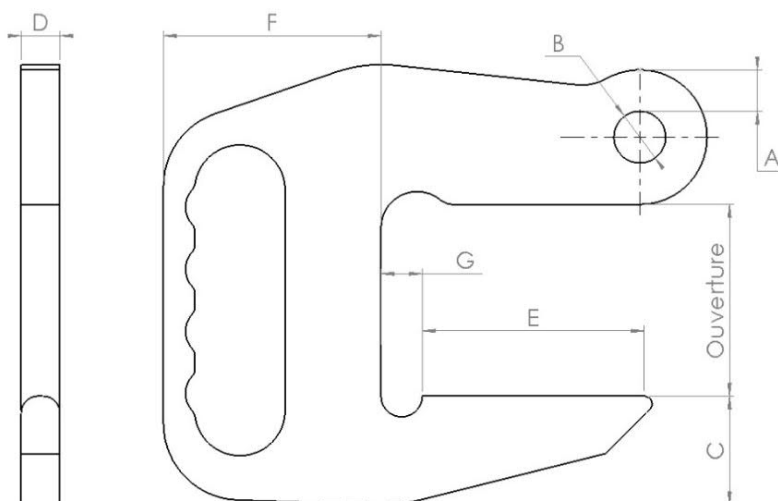
- Recommended sling angle: 90°.
- Working temperature: -20° to +100°C.

GENERAL CHARACTERISTICS

- Manufactured without load bearing welds.
- Hot epoxy protection.
- Safety factor: 3 in accordance with the EN 13155.2003 standard.
- Conformity to the French regulation, in particular the decree of 01/03/2004 relating to the check on lifting accessories and the European Directive n° 2006/42/CE
- Product with EC marking and delivered with a declaration of conformity and instructions for use.

DIMENSIONAL CHARACTERISTICS

Ref.	Group code	designation	WLL/ pair kg	Opening mm	Dimensions in mm						
					A	B	C	D ¹	E	F	G
F2-0-60/II	189028	F hook					42	15	86	84	16
F2-0-60/IIPVC	185968	F hook + PVC protection	2 000	0-60	16	20	47	20	88	89	11
F2-0-45/IIPU	189078	F hook + PU protection		0-45			52	15	86	94	/
F5-0-75/II	189038	F hook					61	20	101	102	20
F5-0-75/IIPVC	185978	F hook + PVC protection	5 000	0-75	21.5	27	66	25	103	107	15
F5-0-55/IIPU	189088	F hook + PU protection		0-55			71	20	101	112	/
F7.5-0-100/II	185958	F hook					61	25	111	104	20
F7.5-0-100/IIPVC	185988	F hook + PVC protection	7 500	0-100	23.5	29	66	30	113	109	15
F7.5-0-90/IIPU	189098	F hook + PU protection		0-90			71	25	111	114	/
F10-0-100/II	189048	F hook					110	30	121	125	28
F10-0-100/IIPVC	185998	F hook + PVC protection	10 000	0-100	29	36	115	35	124	130	23
F10-0-90/IIPU	189108	F hook + PU protection		0-90			120	30	121	135	/
F15-0-100/II	189058	F hook					110	35	121	132	36
F15-0-100/IIPVC	189008	F hook + PVC protection	15 000	0-100	34.5	45	115	40	122	137	41
F15-0-90/IIPU	189118	F hook + PU protection		0-90			120	35	121	142	/



Réf.	Group code	Designation	WLL/ pair kg	Sling angle	Ø chain mini mm	Mini WLL Shackle ² t	Weight/ pair kg
F2-0-60/II	189028	F hook					
F2-0-60/IIPVC	185968	F hook + PVC protection	2 000		8	1.5	4
F2-0-45/IIPU	189078	F hook + PU protection					
F5-0-75/II	189038	F hook					
F5-0-75/IIPVC	185978	F hook + PVC protection	5 000		13	4.75	10
F5-0-55/IIPU	189088	F hook + PU protection					
F7.5-0-100/II	185958	F hook					
F7.5-0-100/IIPVC	185988	F hook + PVC protection	7 500	90°		6.5	15
F7.5-0-90/IIPU	189098	F hook + PU protection			16		
F10-0-100/II	189048	F hook					
F10-0-100/IIPVC	185998	F hook + PVC protection	10 000			8.5	30
F10-0-90/IIPU	189108	F hook + PU protection					
F15-0-100/II	189058	F hook					
F15-0-100/IIPVC	189008	F hook + PVC protection	15 000		20	12	40
F15-0-90/IIPU	189118	F hook + PU protection					

¹ Dimension on metal sheet, without PU for F Hooks + PU protection

² Be careful, the inner width of the shackle must also be able to fit the thickness D of the hook

SLINGS

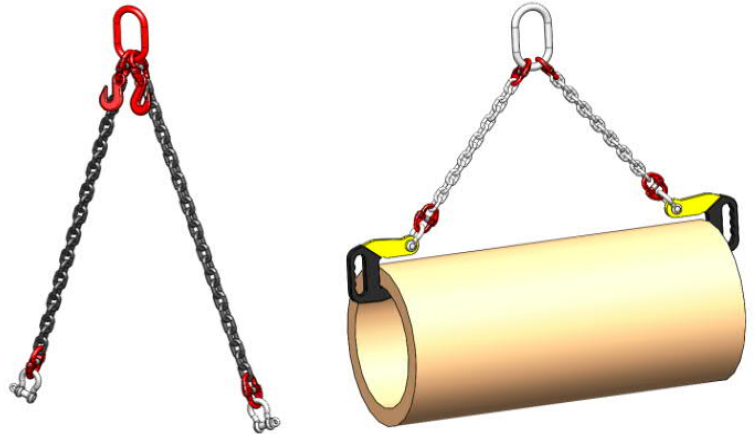
2-Legged chain slings 80 grades, equipped with a simple head ring, shackles for fixation to the F hooks and a shortener on each sling.

With this shortener, the slings' length can be adjusted according to the pipes' length, in order to lift with a sling angle of 90°

The slings are standardised in length between 1 to 5 meters, please consult us for other lengths

They are codified as follows: ExWwwwDyyHR / zzzz

- x = legs, always 2 for F hooks
- www = WLL in t
- yy = chain Ø in mm
- HR : for slings with HR shackles at the end of each leg
- zzzz = length of leg in mm



Considering the recommended sling angle of 90°, the correspondences between the slings' length and the maximum length of the pipe are as follows:

Shorter pipes can be lifted with the shortener

Max sling angle	Hooks	Sling length zzzz	1 000 mm	2 000 mm	3 000 mm	4 000 mm	5 000 mm
90°	F, TB	Max tube length	1 400 mm	2 800 mm	4 200 mm	5 600 mm	7 000 mm

Reference	Sling WLL kg	legs	Chain Ø mm	F hooks				
				2	5	7.5	10	15
E2W03,0D08HR/zzzz	3 000	2	8					
E2W08,5D13HR/zzzz	8 500	2	13					
E2W11,5D16HR/zzzz	11 500	2	16					
E2W17,0D20HR/zzzz	17 000	2	20					

Sling	Group code	Length zzzz				
		1 000 mm	2 000 mm	3 000 mm	4 000 mm	5 000 mm
E2W03,0D08HR/zzzz		191698	191798	191898	192208	192308
E2W08,5D13HR/zzzz		191728	191828	192138	192238	192338
E2W11,5D16HR/zzzz		191748	191848	192158	192258	192358
E2W17,0D20HR/zzzz		191768	191868	192178	192278	192378